

Class 4 ROLLER BRAKE TESTER

Connected MOT Equipment

The Kendon 846 is a Single bed roller brake tester for passenger cars, vans and light commercial vehicles and meets the latest DVSA requirements. In addition to measuring the brake forces per wheel and the difference between the left and right sides, the operator can determine the important quantities rolling resistance, actuation force, ovality (out-of-roundness) and brake fading for each wheel. Special attention has been given to prevent damage to the tyres. The rollers are very quickly stopped when slippage occurs, even during the start-up of the motors. All roller brake testers are equipped with reliable worm gear motors. All moving components are supported by roller bearings for a long and trouble free service. Manufactured by Altesco, in Holland.

Specifications

Maximum axle load: **4 tonne**

Roller speed: **5 km/h**

Brake force maximum: **8000 N**

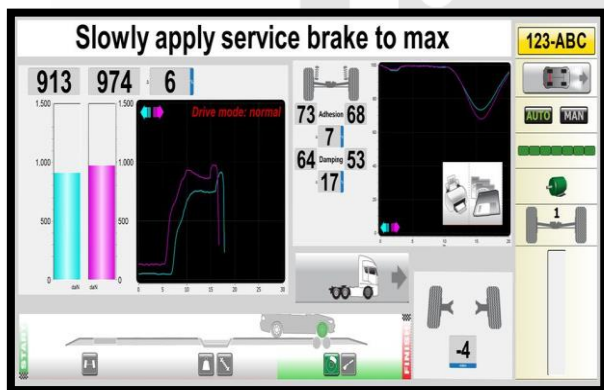
Rollers: **206 x 700 mm**

Track: **800-2200 mm**

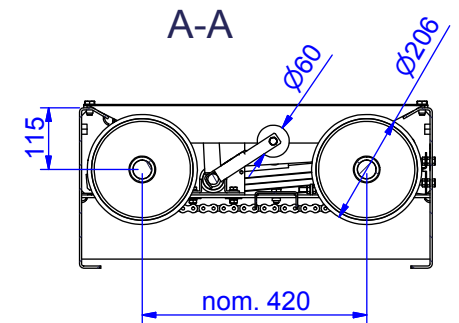
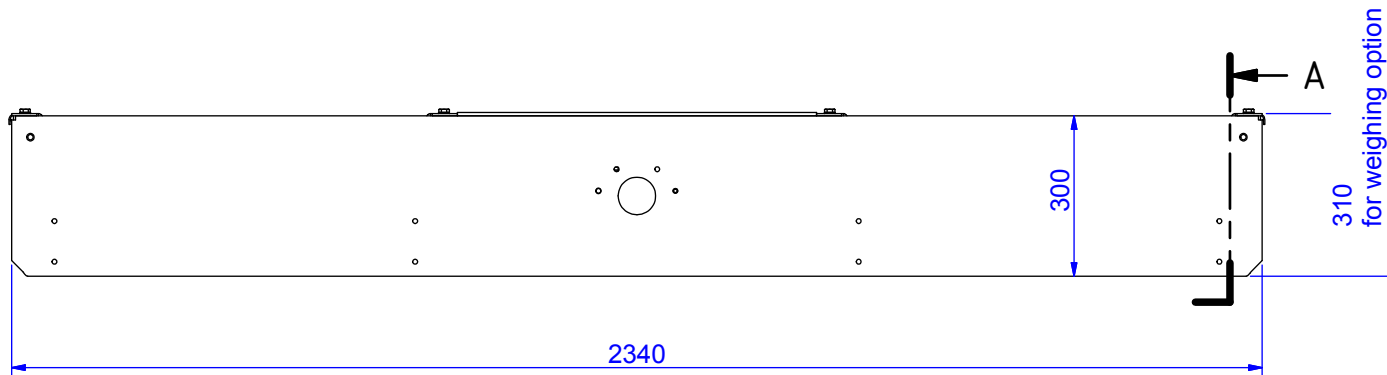
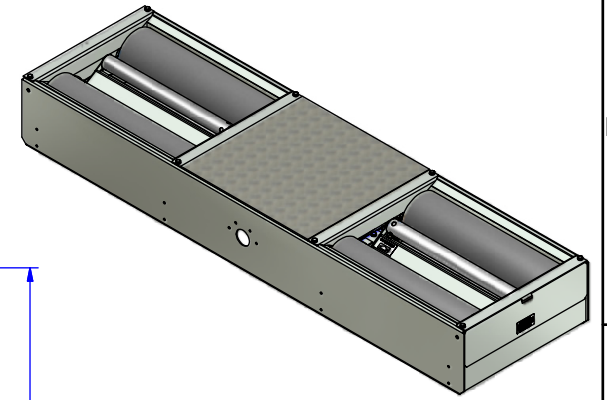
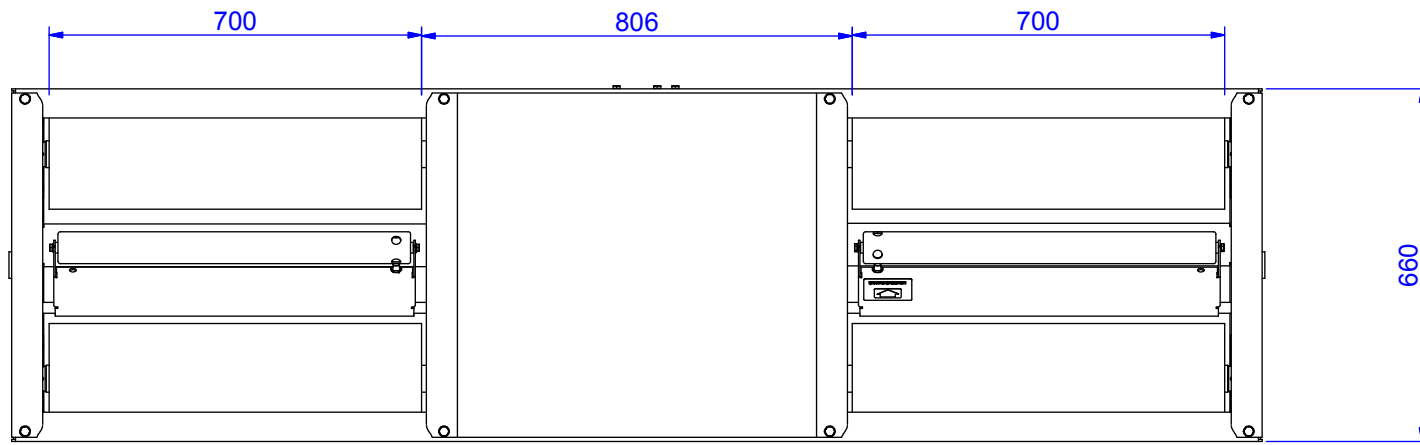
Dimensions: **2340 x 660 x 300 mm**

Chassis: **Hot dip zinc**

Power supply: **2 x 5.5 kW; 3 phase, 400 V, 50 Hz**



All our MOT Testing Equipment is approved by



altesco	Dimension range mm										
	> 0,5 ...3	> 3 ...6	> 6 ...30	> 30 ...120	> 120 ...400	> 400 ...1000	> 1000 ...2000	> 2000 ...4000	> 4000 ...8000	> 8000 ...12000	
	Tolerance mm										
	± 0,05	± 0,1	± 0,2	± 0,3	± 0,5	± 0,8	± 1,2	± 2	± 3	± 4	
Drachmeweg 26 2153PA Nieuw Vennepe NL T: +31-88-2583700 F: +31-88-2583790	Titel		Dimensional drawing RT2004								
	Material										
	Finish										
A3	Drawing nr.		312851								
	Scale										
	Drawn by		PB				Date				18-9-2009

