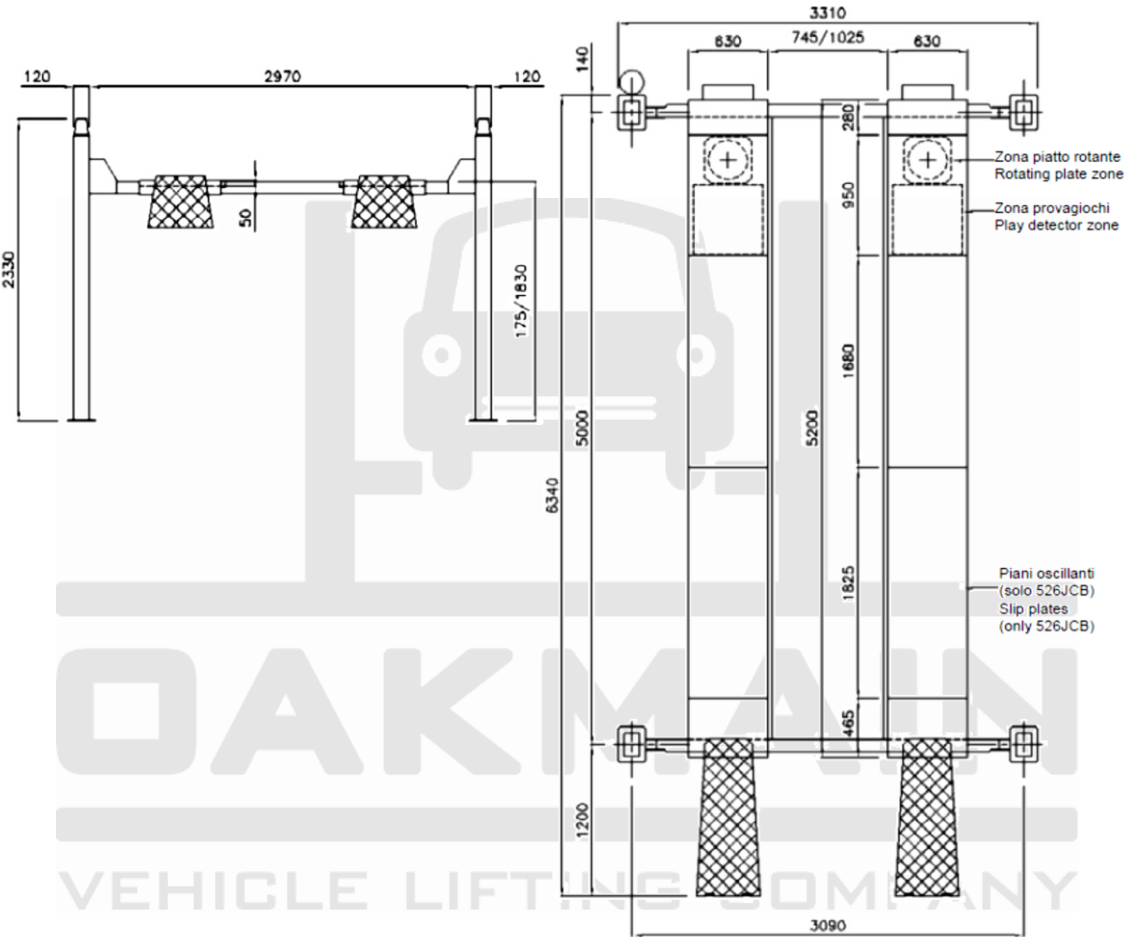


## Class 7 ATL – 4 Tonne MOT Lift

- 4 Tonne lifting capacity
- Safety device in case of rope breaking
- Overload safety-device
- Descent control valve
- Safety-valve in case of sudden loss of pressure
- "Dead man" controls 24V
- Electrical controlled fall safety
- Automatic descent control
- Soundproof safety devices
- Fitted with Play Detectors
- Fitted with Turn Plates for Wheel Alignment
- Manufactured by OMA





### 526JC Spec

Lifting Capacity	4000kg
Weight	1310kg
Lifting Height	1830mm
Platform Length	5200mm
Motor	3kW – 3Ph 230-400V-50HZ
Lifting/Lowering Time	30s